

Cast Iron Firebacks and Dog Grates

for open hearth fireplaces

LIST No. 3 JANUARY, 1972



MADE AND STOCKED BY

F. PARKIN & SONS LTD

Established 1849

P.O. BOX 3

7/9 BONHAY ROAD EXETER EX4 3AF

TELEPHONE 77345 (4 lines) TELEX 42972



FB 10 SWISS

Width 22 ins Height 28 ins

FB 12 '1701'

Width 18 ins Height 27 ins

FB 2 '1553'

Width 21½ ins Height 28 ins

Cast Iron Firebacks

Maker's Note:

We regret we cannot even attempt to sketch the fascinating story of the FIREBACK, which begins some 400 years ago. Its function was to protect the stone at the back of the large open fireplace from the heat of the fire.

Placed at the focal point of a room it soon became ornamental as well as useful. Thus it follows that from the days of the Tudors for the next 200 years the design of the Fireback reflected not only national and family history but also the artistic and cultural trend of the period.

Although cast-iron resists heat, in course of time a back might have become cracked or burnt in places. It was then sometimes sent to a foundry, used as a "pattern" and "re-cast". It follows therefore that whilst the *design remained unchanged*, any fireback might well be a much later edition of the original casting.

The Firebacks shown in this list have been reproduced in this way from various examples which we have been able to collect over the years. They include a number of continental origin chiefly from western Europe.



FB 11 SOWTON Width 38 ins Height 57 ins



FB 6 SUN

Width 22½ ins Height 31 ins



FB 8 FOX and CRANE

Width 17½ ins Height 24 ins



FB 4 NEPTUNE

Width 21 ins Height 33ins



FB 3 '1558'
Width 22 ins Height 26 ins



FB 1 '1662'
Width 36 ins Height 30 ins



FB 9 DREWSTEIGTON
Width 19 ins Height 30 ins



FB 14 CHARLES I
Width 30 ins Height 40 ins



FB 16 STUART
Width 30½ ins Height 26¾ ins



FB 5 ABRAHAM and ISAAC
Width 24 ins Height 31 ins
FB 5a similar but 30 ins wide



FB 7 POLE
Width 19 ins Height 28 ins

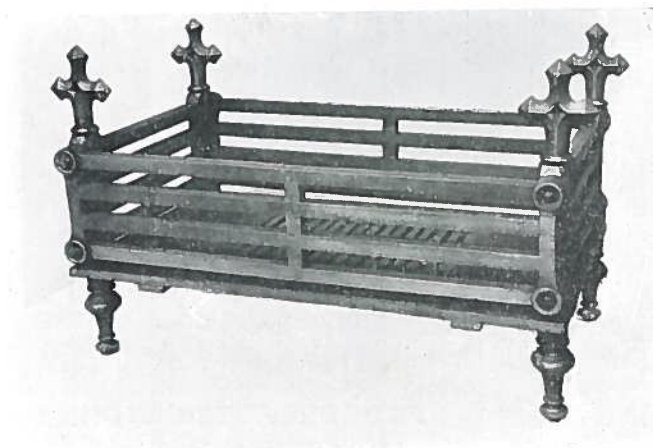


FB 15 CADHAY
Width 24 ins Height 31 ins

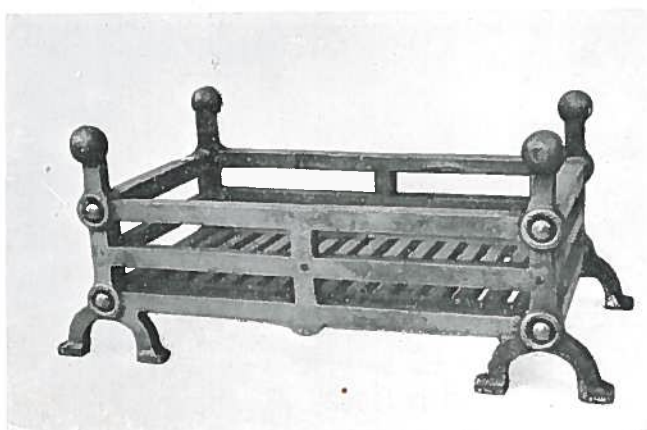
SUMMARY

code no.	width	height	approx. weight
FB 1	36 ins	x 30 ins	256 lbs
FB 2	21½ ins	x 28 ins	124 lbs
FB 3	22 ins	x 26 ins	122 lbs
FB 4	21 ins	x 33 ins	118 lbs
FB 5	24 ins	x 31 ins	134 lbs
FB 5a	30 ins	x 31 ins	158 lbs
FB 6	22½ ins	x 31 ins	82 lbs
FB 7	19 ins	x 28 ins	64 lbs
FB 8	17½ ins	x 24 ins	52 lbs
FB 9	19 ins	x 30 ins	89 lbs
FB 10	22 ins	x 28 ins	108 lbs
FB 11	38 ins	x 54 ins	372 lbs
FB 12	18 ins	x 27 ins	88 lbs
FB 13*	39½ ins	x 27 ins	214 lbs
FB 14	30½ ins	x 40 ins	172 lbs
FB 15	24 ins	x 31 ins	108 lbs
FB 16	30½ ins	x 26¾ ins	146 lbs

*Plain Back not shown



DG 2 Width 33 ins Depth 21 ins



DG 4 Width 25 ins Depth 13 ins



DG 7 Width 33 ins Depth 14 ins

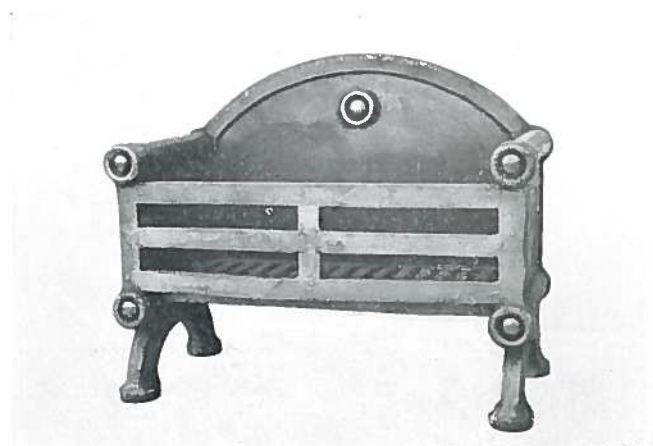
Cast Iron Dog Grates

The GRATES shown in this list are entirely our own design and are intended for use in open fireplaces. Robustly constructed in Cast-Iron they are particularly suitable for burning logs, although coal and coke can also be used. Whilst they will give years of trouble-free service, replacement parts are available if necessary.

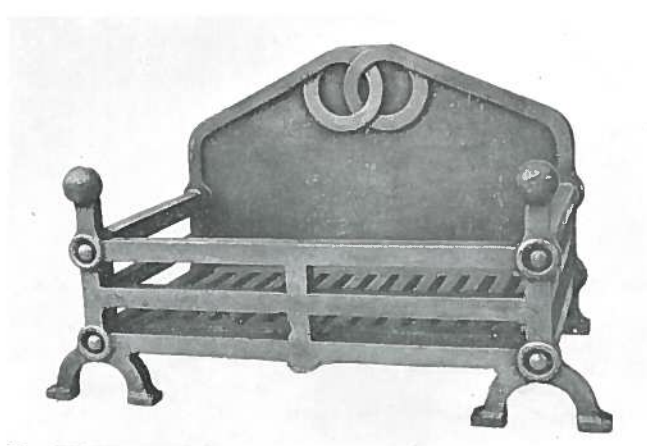
They are frequently installed in conjunction with a Cast-Iron Fireback, and for this we recommend those patterns which have bars at the back as well as in front. Pattern Nos. DG 2, DG 4 and DG 7 are well suited for this purpose.

SUMMARY

code no.	width (overall)	depth (front to back)	weight
DG 1	21 ins	x 10 ins	118 lbs
DG 2	33 ins	x 21 ins	252 lbs
DG 3	25 ins	x 13 ins	100 lbs
DG 4	25 ins	x 13 ins	72 lbs
DG 7	33 ins	x 14 ins	158 lbs



DG 1 Width 21 ins Depth 10 ins



DG 3 Width 25 ins Depth 13 ins

MADE AND STOCKED BY

F. PARKIN & SONS LTD

P.O. Box 3 7/9 Bonhay Road Exeter EX4 3AF
Telephone 77345 (4 lines) Telex 42972

Established 1849